

Defiance and Perseverance:

## The Verhaeghe Vichte Brewery

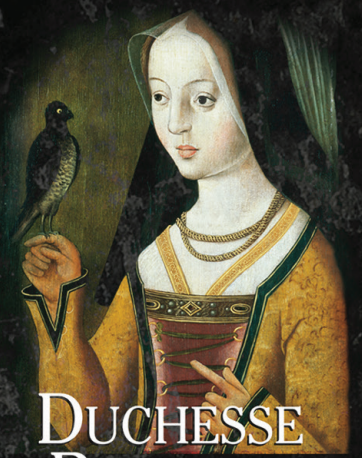
Founded by Paul Verhaeghe in 1885 in the province of West French Flanders, Belgium, the small, family-owned brewery was very active up until the Great War thanks to the railway line that connected Vichte with Brussels. At the outbreak of the First World War, Paul Verhaeghe responded to the call of the Belgian government to resist the German occupation economically by stopping production in the brewery and malterie. German soldiers dismantled the brewery in response to Verhaeghe's defiance.

After a win by the Allies, and 4 years of inactivity, the brewery began their work again. The Verhaeghe Brewery is and has always been dedicated to a "less, but better" maxim, wherein high quality and a unique personality over-ride all else.

## A Flanders Ale

Duchesse de Bourgogne, a red brown ale - or Flanders ale - is aged in oak casks and brewed according to an ancient method that is geographically linked with the province of West French Flanders. The "Duchess of Burgundy" is a mixed fermentation ale, given its fruity, sour character and fresh aftertaste from the tannins in the oak casks, where it is carefully matured for 18 months.

The name of the beer is in honour of Duchess Mary of Burgundy, who reigned the vast and vastly wealthy Burgundian domains in France and the Low Countries (Netherlands, Belgium) from 1477 until she died tragically after being thrown from her horse. Her tomb effigy is located in the famous Notre Dame Cathedral in Bruges alongside Michelangelo's marble sculpture of the Madonna, of Mary and child.



DUCHESSE  
DE BOURGOGNE

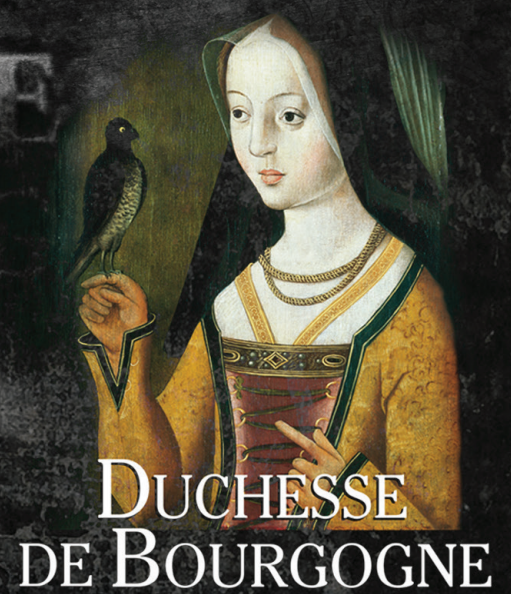
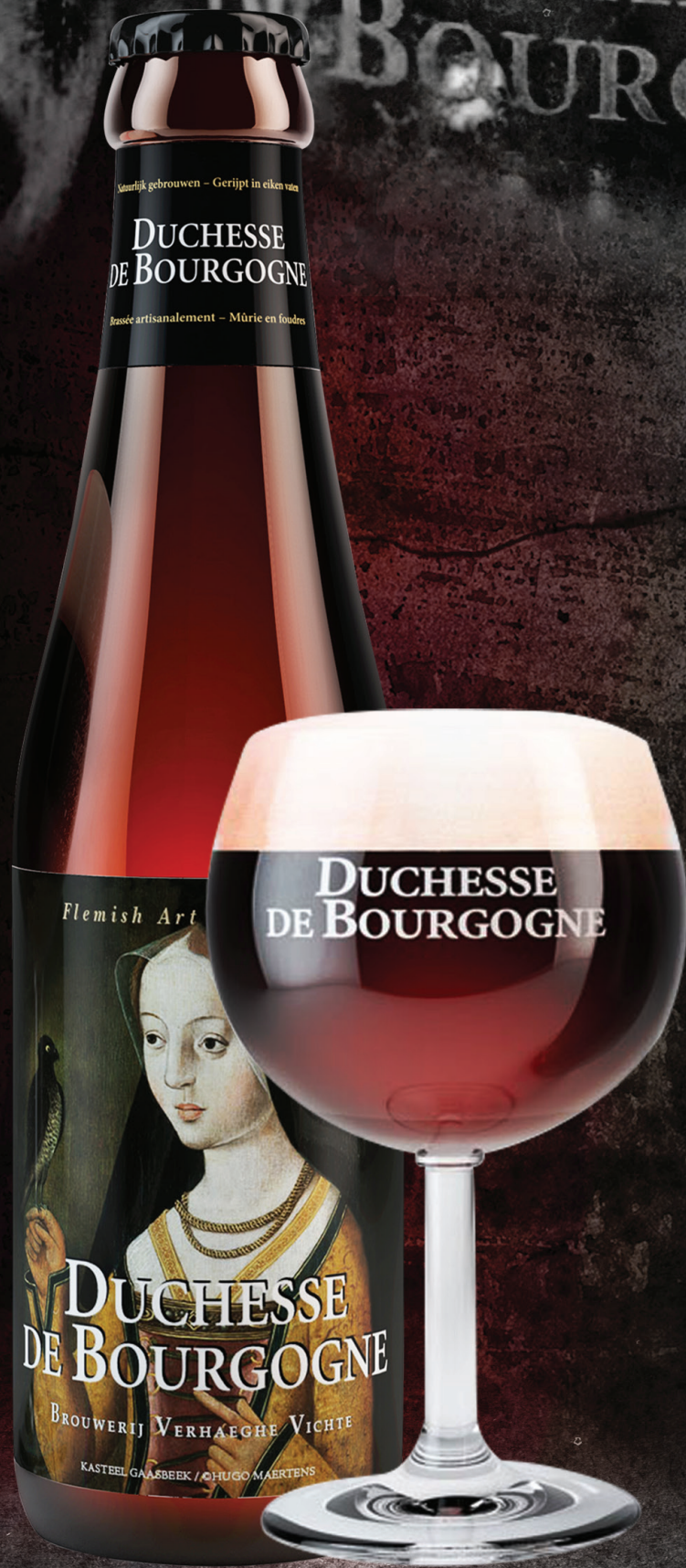
Br. Verhaeghe Vichte

Kasteel Gaasbeek / © Hugo Maertens



To preview our full range of beers please visit:

[WWW.MCCLELLANDBEERS.CA](http://WWW.MCCLELLANDBEERS.CA)



# DUCHESSSE DE BOURGOGNE

Br. Verhaeghe Vichte

Kasteel Gaasbeek / © Hugo Maertens

## Style

Flemish Red



ABV

6.2%

## Apperance

Chestnut brown with rich auburn and ruby hues; mocha-coloured foam collar

## Nose

Sherry and balsamic vinegar; aromas of Granny Smith apple, fresh-pressed grapes, chocolate-coated cherry and almonds with mild, earthy accents of cigar and leather peaking through

## Flavour

a pleasant rum-like sting up front leads to a beautiful and complex interaction of sweet and tart; notes of candied plum and candied cherry, burnt toffee and molasses with bruised apple and sour cherry; finish is thought-provoking – a tart and sharply dry aftertaste plays with a lingering sweetness

## Available Sizes and Format:

**Bottle:** 330ml

**Keg:** 20L

To preview our full range of beers please visit:

[WWW.MCCLELLANDBEERS.CA](http://WWW.MCCLELLANDBEERS.CA)